

Harmony

BASSINI

INSTALLATION INSTRUCTIONS FOR BASSINI WALL HUNG TOILET PANS

Bassini wall-hung pans are designed for installation with Bassini concealed cisterns and mounting frames, with product codes **HARMONY12500 & HARMONY12550**.

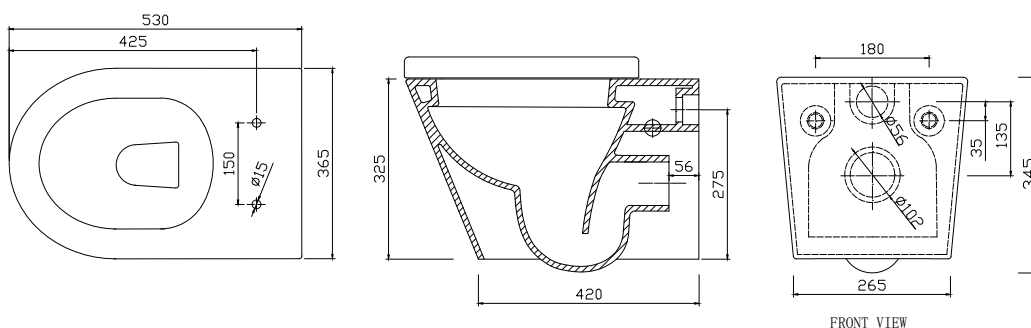
Separate installation instructions come with the cistern. These installation instructions are for the wall-hung pans, with codes **HARMONY12501 & HARMONY12551**.

Before installation, a visual check of the suite should be undertaken. The pan, seat, pan fixings and trap connector come in one box and the cistern, valves and mounting frame are in separate boxes. Ensure that nothing is damaged or missing.

BASSINI Wall Hung Toilet Pans

(Fig. 1)

HARMONY12501
HARMONY12551



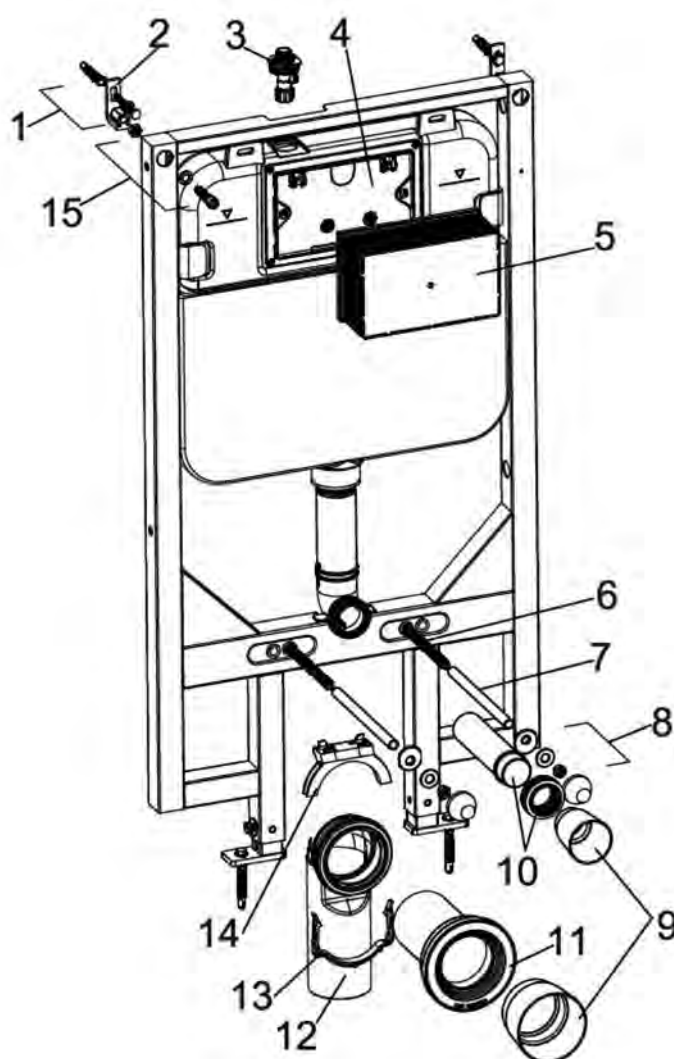
The installation of this toilet suite should be undertaken by a qualified and licensed plumber and in accordance with the National Plumbing Code AS/NZS 3500.2 Harmony sanitaryware products are designed to meet the appropriate Australian standards.

For further information, visit www.harmonybathroomware.com.au

Suits Models:

HARMONY12500, HARMONY12550

1. First, Install the cistern in the wall as per the instructions accompanying the concealed cistern. It is important to adhere to the height and water pressure recommendations for the cistern.

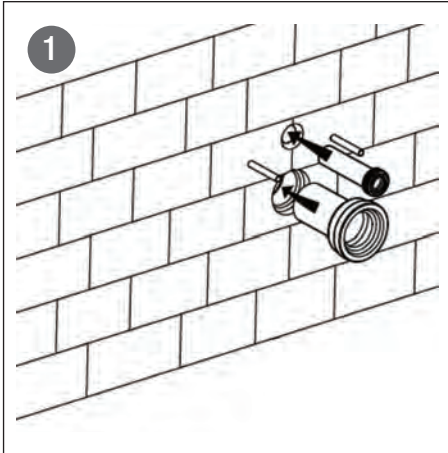


LIST OF INSTALLATION COMPONENTS

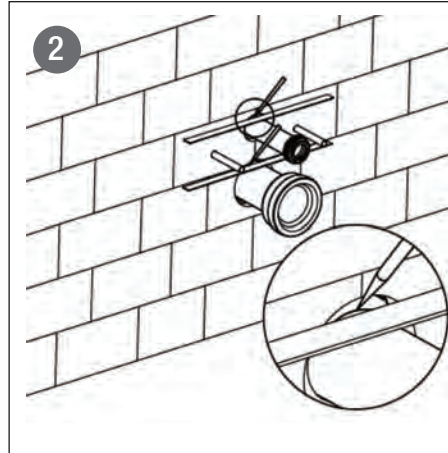
Fig.	Description	Qty	Function
1.	Coach fixing screw	4	For mounting of the frame and the wall bracket
2.	Wall bracket	2	For fixing of frame
3.	Stop valve	1	To isolate the water supply
4.	Plastic cover	1	For mounting of the flush panel mounting block
5.	Flush panel mounting block	1	To reserve space for installation of actuator at fit-off, and as a temporary protective cap
6.	Connecting bolt	2	To mount the pan
7.	Bolt protection sleeve	2	To protect connecting bolt during installation
8.	Pan fixing kit	2	To mount pan
9.	Pipe stopper	2	Temporary plug for the flush pipe and waste outlet
10.	Flush pipe	1	To connect the cistern with the pan
11.	Waste outlet pipe	1	To be cut in accordance with wall thickness
12.	Trap connector	1	To connect to the existing drainage
13.	Mounting bracket part 1	1	To hold waste elbow in position
14.	Mounting bracket part 2	1	To hold waste elbow in position
15.	Socket head screw	2	To attach the frame to the wall bracket

For further information, visit www.harmonybathroomware.com.au

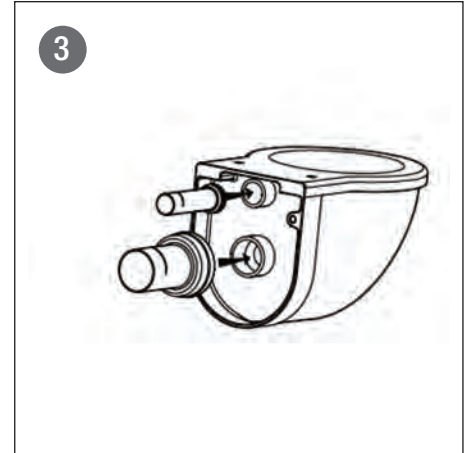
2. Mounting the pan.



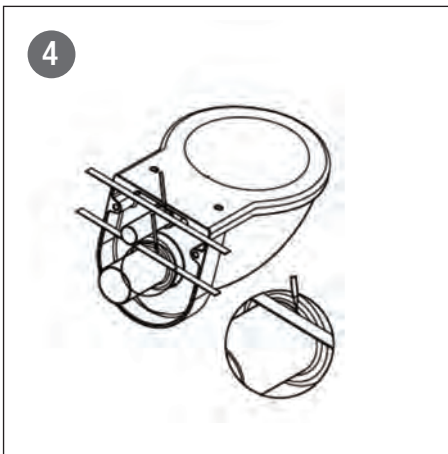
1. Fully insert the flush pipe into the cistern outlet and fully insert the waste pipe into the waste outlet.



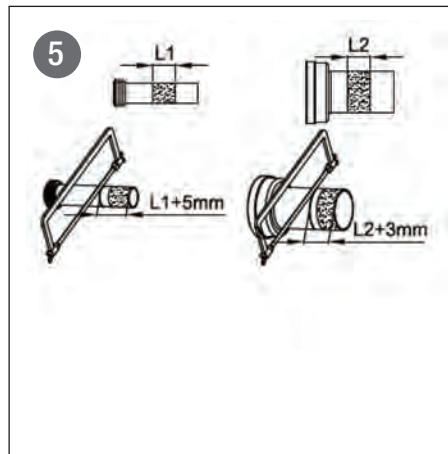
2. Draw lines as per the diagram.



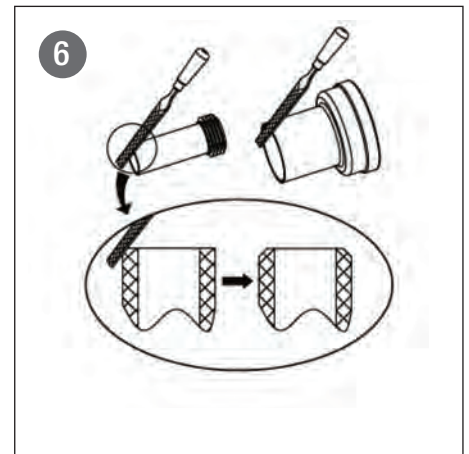
3. Lubricate the rubber washers of the flush pipe and the waste pipe (using a water-based lubricant), then insert them into the pan.



4. Draw lines as per the diagram.

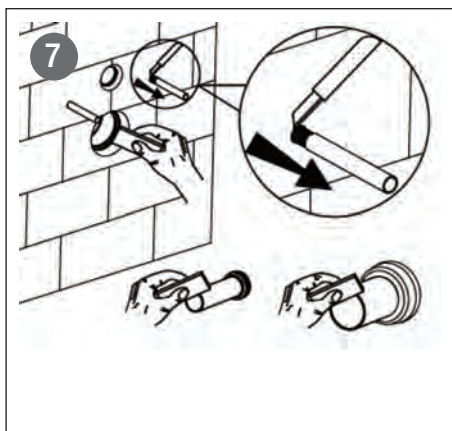


5. In this diagram, L1 is the distance between the two lines on the flush pipe and L2 is the distance between the two lines on the waste outlet pipe. Cut both pipes as per the diagram.

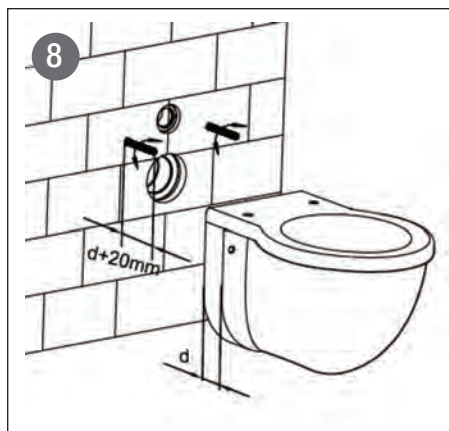


6. Chamfer the ends of the both pipes and deburr if necessary.

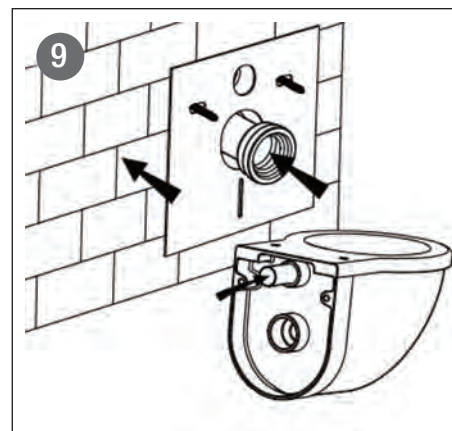
2. Mounting the pan continued.



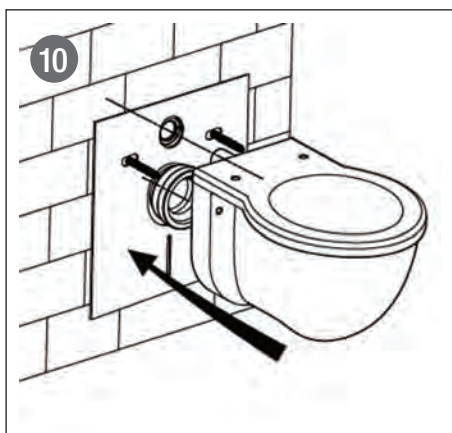
7. Cut the protective sleeves sitting outside the wall. Apply lubricant to the joint surface of the flush pipe and the waste outlet pipe.



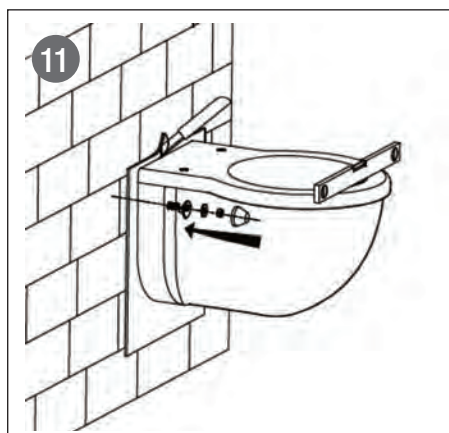
8. Adjust length of connecting bolt to be $d+20\text{mm}$.



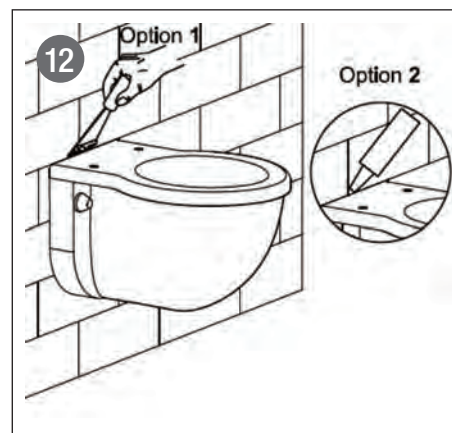
9. Insert the trap connector into the waste outlet and the flush pipe into the ceramic pan.



10. Mounting the pan.



11. Screw the pan to the frame and the wall. Ensure the pan is level.



12. Apply sanitary grade silicone to the gap at the back and the sides of the pan.

For further information, visit www.harmonybathroomware.com.au

Disclaimer: Dimensions and set-outs contained in these instructions are correct at the time of publication. However, neither the manufacturer nor the distributor takes responsibility for printing errors. The manufacturer and the distributor reserve the right to vary specifications or delete toilet suite models without prior notification. A failure to follow these instructions, or a failure to have the product installed by a licensed tradesperson, may void the product's warranty.