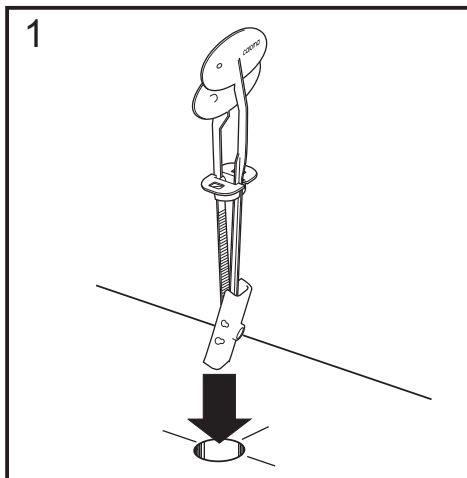
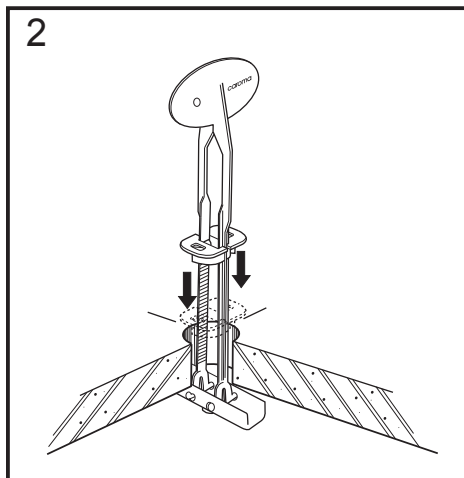


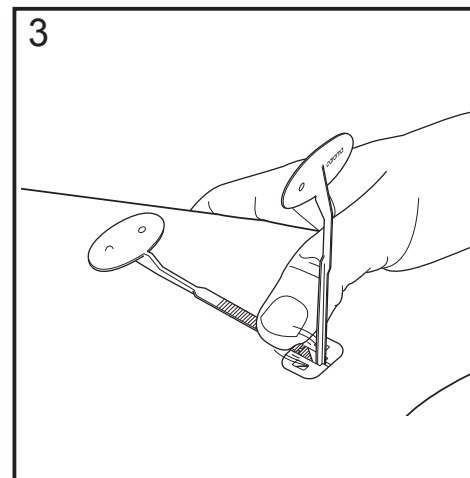
### PEDIGREE II CARE Toilet seat



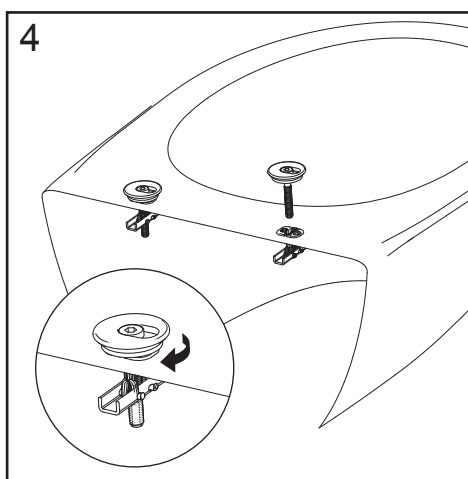
Push metal toggle through pan hole.



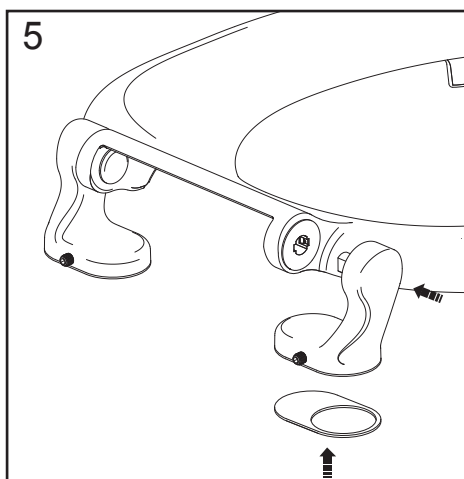
Realign handles and pull upwards while pushing locking bush down into pan hole.



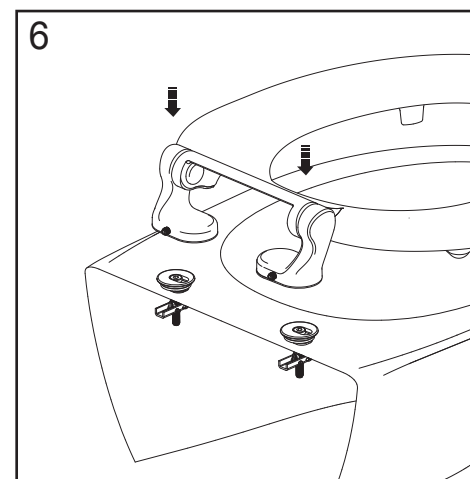
Break off handles flush with locking bush. Trim excess with a pair of side cutters if required.



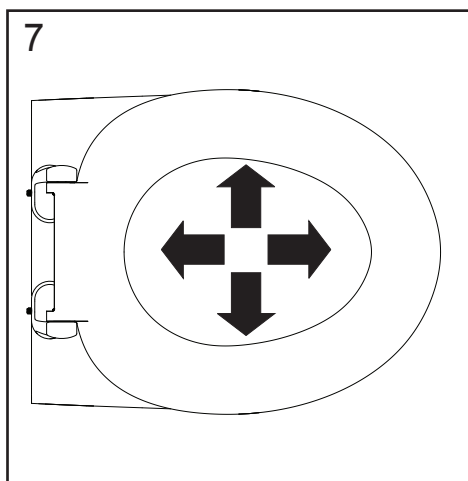
Using the larger allen key provided tighten the Fixing Screw firmly. Note: the Metal Cap should still be able to rotate freely.



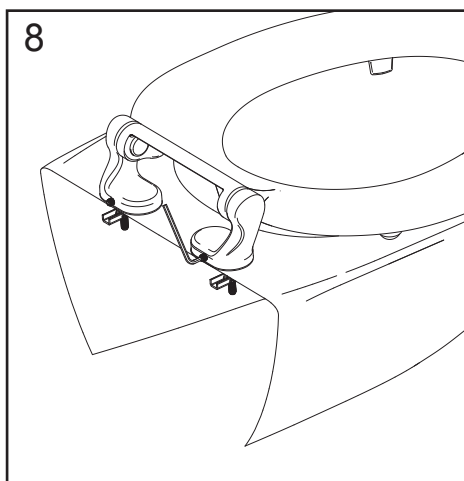
Fully insert Left and Right Hinge Block into matching holes. Ensure the grub screw fixing hole is at the back. Position Hinge Pads on the base of each Hinge Block.



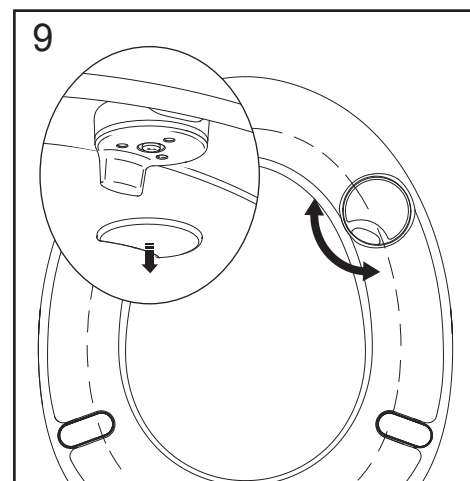
Lower Seat and Hinge Block assemblies onto each Metal Cap.



Adjust Seat to desired position.



Firmly tighten Grub Screws using the smaller Allen Key provided. Ensure Hinge Blocks pull down evenly onto Pan.



Remove front Rubber Buffers and loosen screws. Rotate Cleates to be as close as possible to the inside rim of Pan. Tighten Screws and replace Buffers.

**IMPORTANT :** Never use abrasive or harsh chemical cleaners. Wipe seat with warm soapy water to maintain surface finish.