

Components Overview

COMPONENT	QUANTITY	
LH arm assy	1	
RH arm assy	1	
Hinge plate assy	1	
Gasket	2	
Inner bush	2	
Outer bush	2	
Blanking cap with holes	2	
Support rod	1	
M4 set screw	2	
M8 nut	2	
Fixing screw	2	
Fixing bush	2	
Spacer	2	
Fixing nut	2	
5/16 nut	4	
SS washer	4	
Nylon washer	2	
Rubber seal	2	
5/16 long bolt	2	

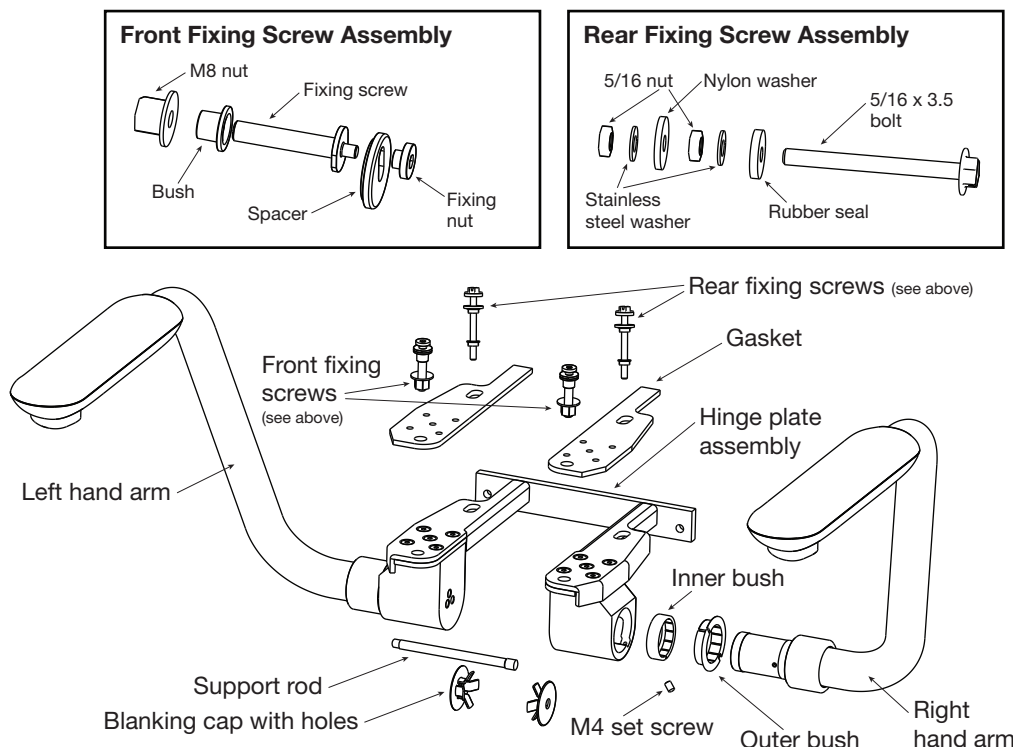


Fig. 1

1. Unpack and check all components as shown in **Fig. 1** above are supplied and unmarked.

Blanking Cap Installation

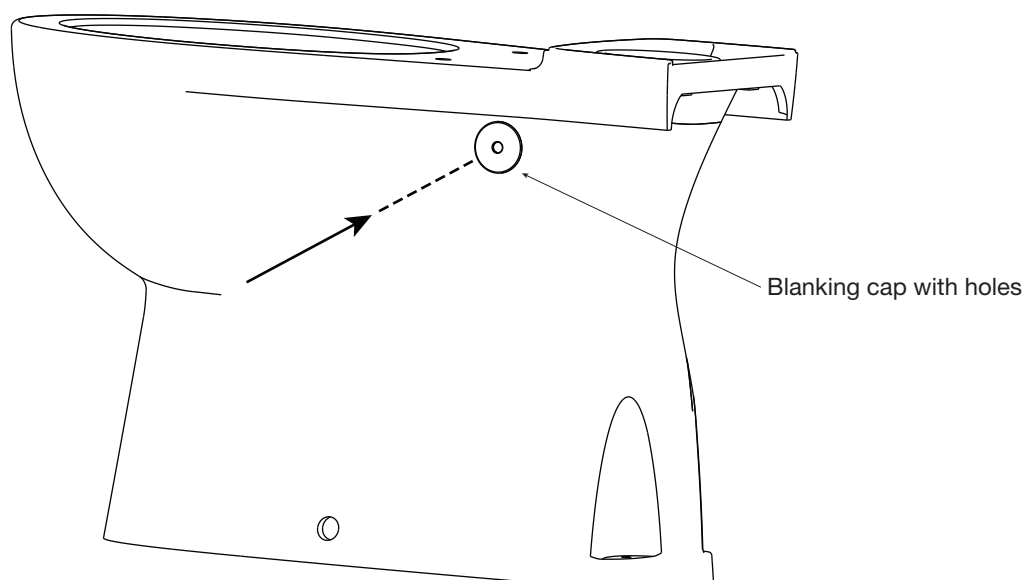


Fig. 2

2. Remove blanking caps without holes and install two (2) x blanking caps with holes (supplied).
3. If Caravelle EH pan has not yet been installed go to step 6, otherwise proceed with retrofit installation in step 4 (next page).

Retrofit Installation ONLY

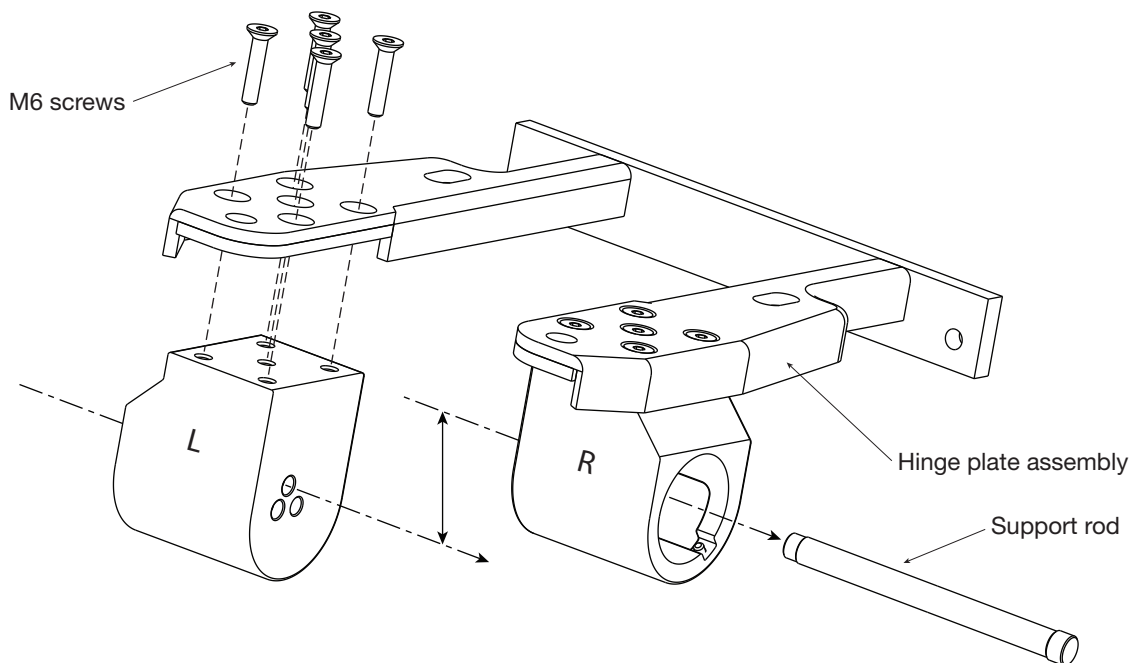


Fig. 3

Caravelle EH pan must be installed previously using full silicone bead and fixing brackets

4. Remove support rod from right hand side, then remove five (5) M6 screws using supplied 5mm allen key. Remove hinge block marked 'L'.

Retrofit Installation ONLY

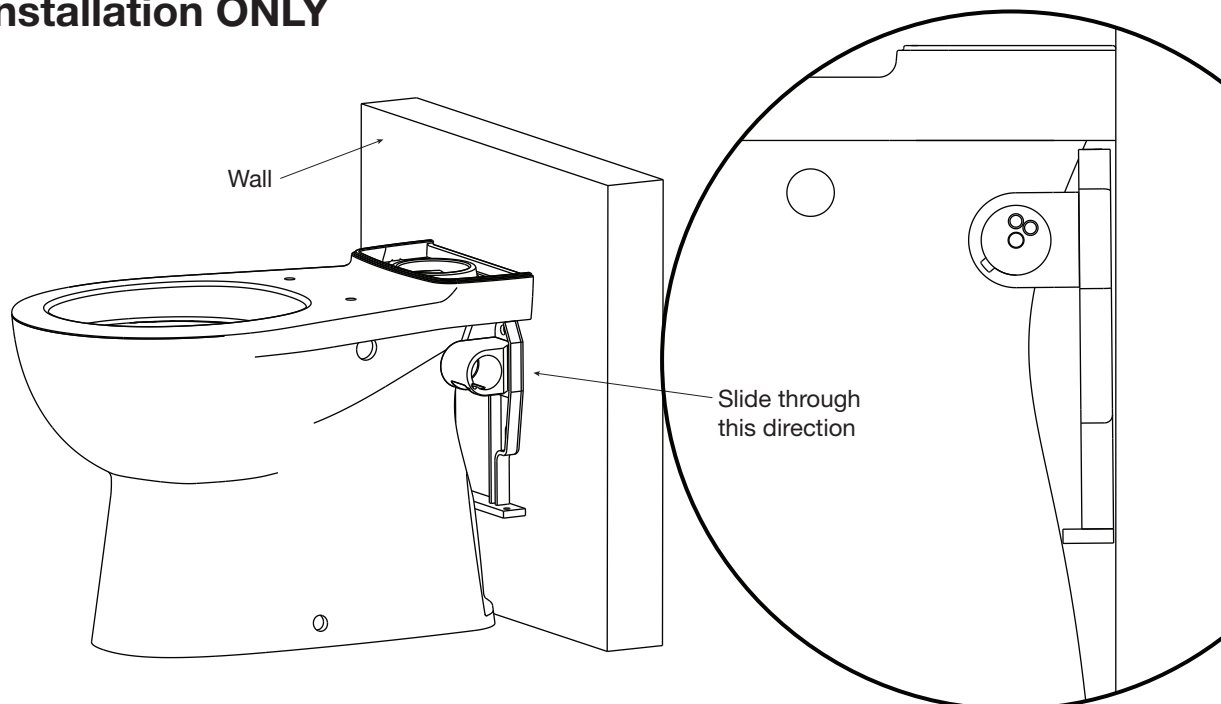


Fig. 4

5. As shown above in **Fig. 4**, pass bracket between wall and pan. Be careful to avoid scratching of tiles and pan. Once bracket is safely through re-attach hinge block with five (5) M6 screws, ensure screws are fully tightened.

Bracket Installation

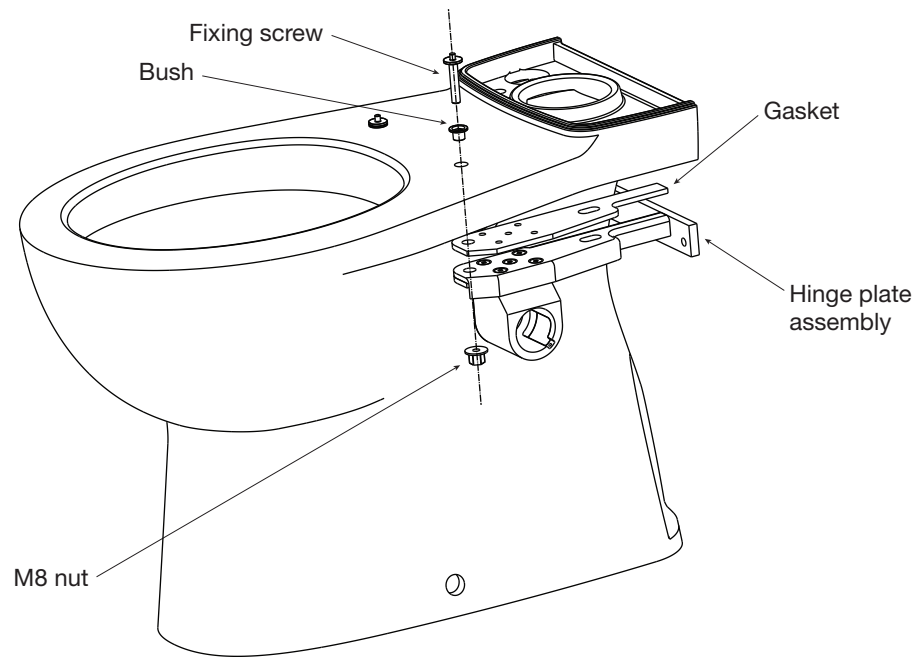


Fig. 5

6. Install two (2) gaskets on hinge bracket. Fix hinge bracket to pan using the supplied front fixing screws as shown above in figure 5. Loosely assemble screws at this point.

Cistern Installation

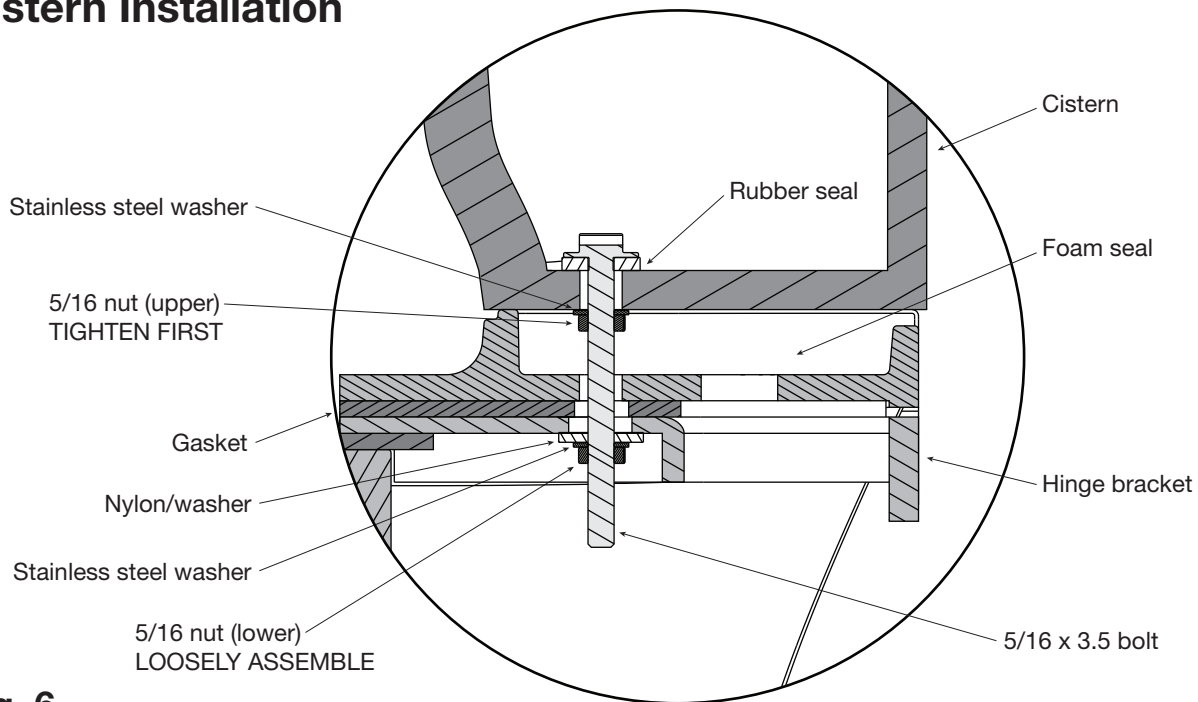


Fig. 6

7. Replace existing short cistern bolt (2.5") with long cistern bolt (3.5") supplied in kit ensuring to tighten upper 5/16 nut. Place cistern onto pan and loosely assemble lower 5/16 nut onto hinge bracket. Ensure correct order of washers.

Support Rod Installation

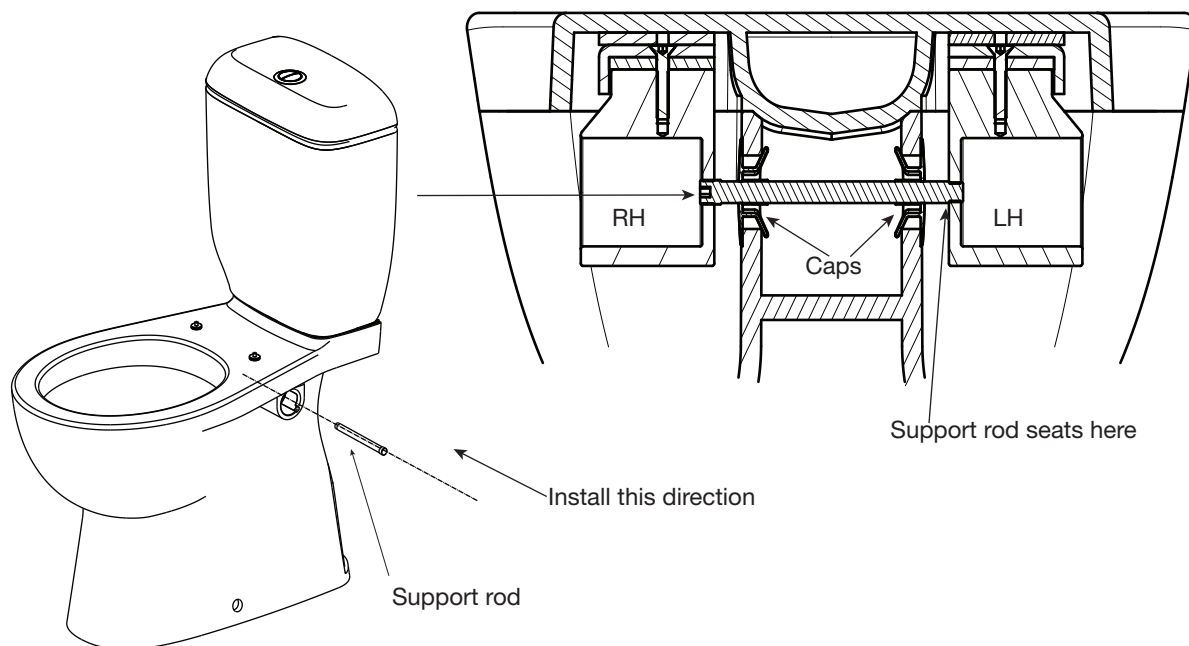


Fig. 7

8. Install support rod from right hand side as shown in **Fig. 7**. Ensure rod passes through holes in RH hinge block and blanking caps and engages into thread on LH hinge block. Screw in until rod seats on LH hinge block. Rod will be flush or protruding 1.5mm from RH inner face.

Bracket to Pan Secure

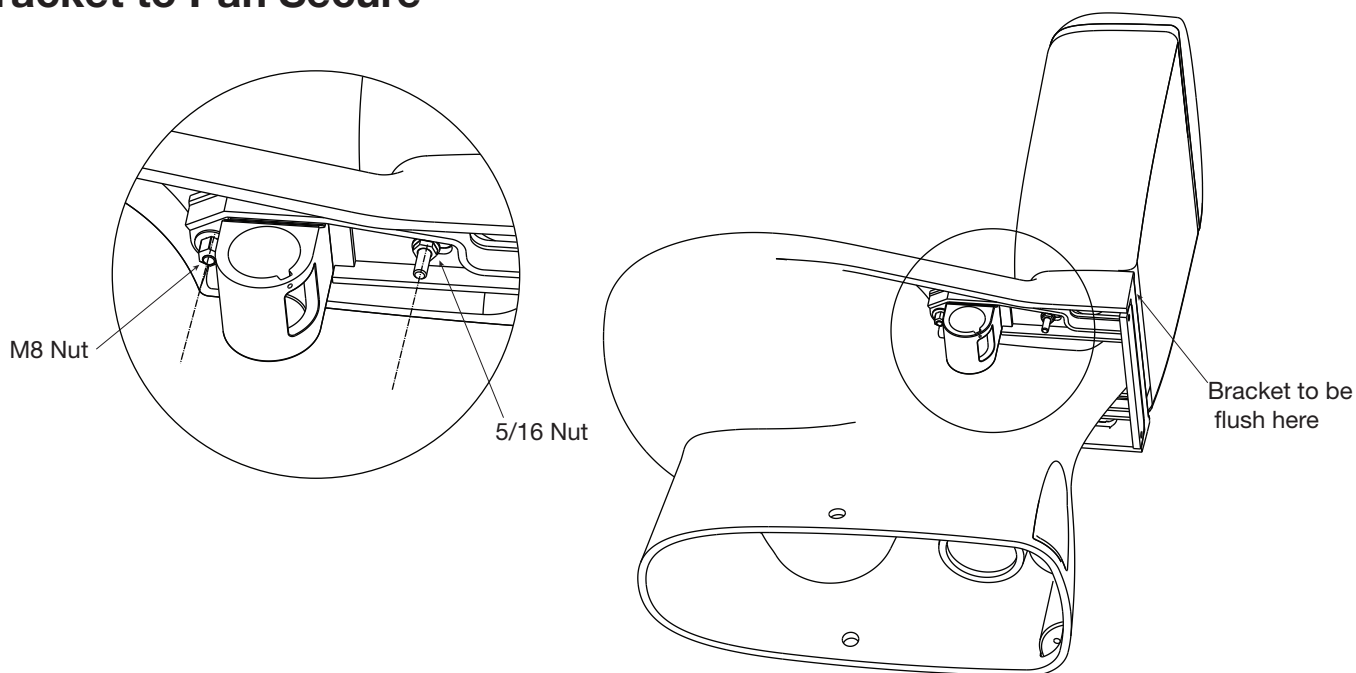


Fig. 8

9. Ensure that rear of hingeblock is flush with back of pan as shown in **fig.8**. Tighten two front M8 and two rear 5/16 nuts to secure the bracket to the pan.

Seat Installation

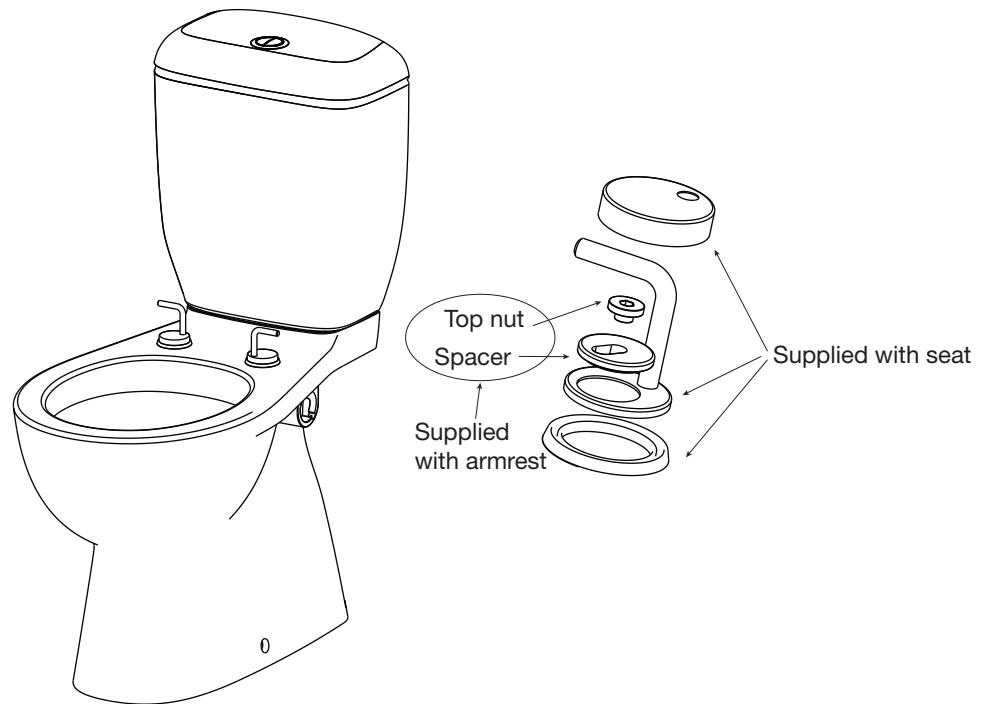


Fig. 9

9. Fix seat to pan as shown in **Fig. 9**. Ensure that you use the spacer provided in the armrest kit.
Discard original spacer supplied with seat, use spacer supplied with armrest.

Pan Fixing

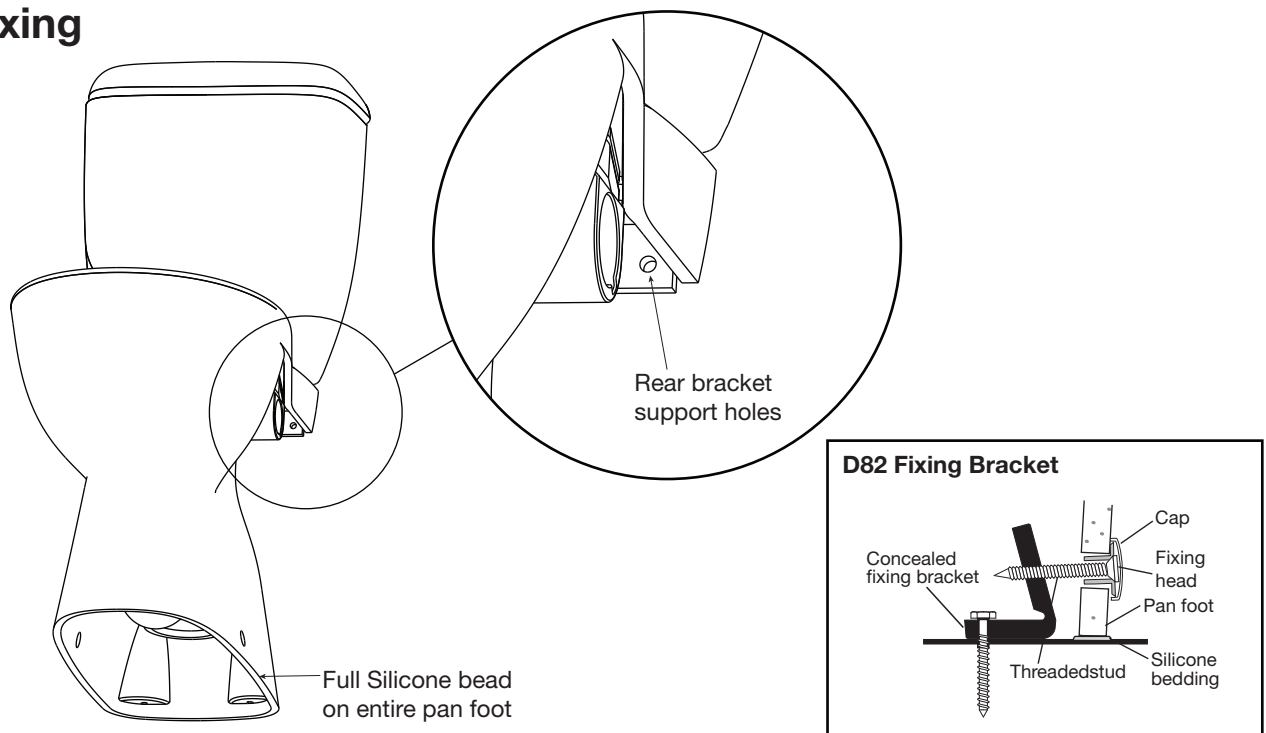


Fig. 10

11. Install pan as outlined in pan installation instructions ensuring a full silicone bead and D82 fixing bracket are used. Insert two (2) M8 wall fixing screws (not supplied) through rear of bracket into wall as shown in **Fig. 10**. Allow at least 24 hours for the bedding sealant to set before use (do not bed with sand-cement mixture).

Arm Installation

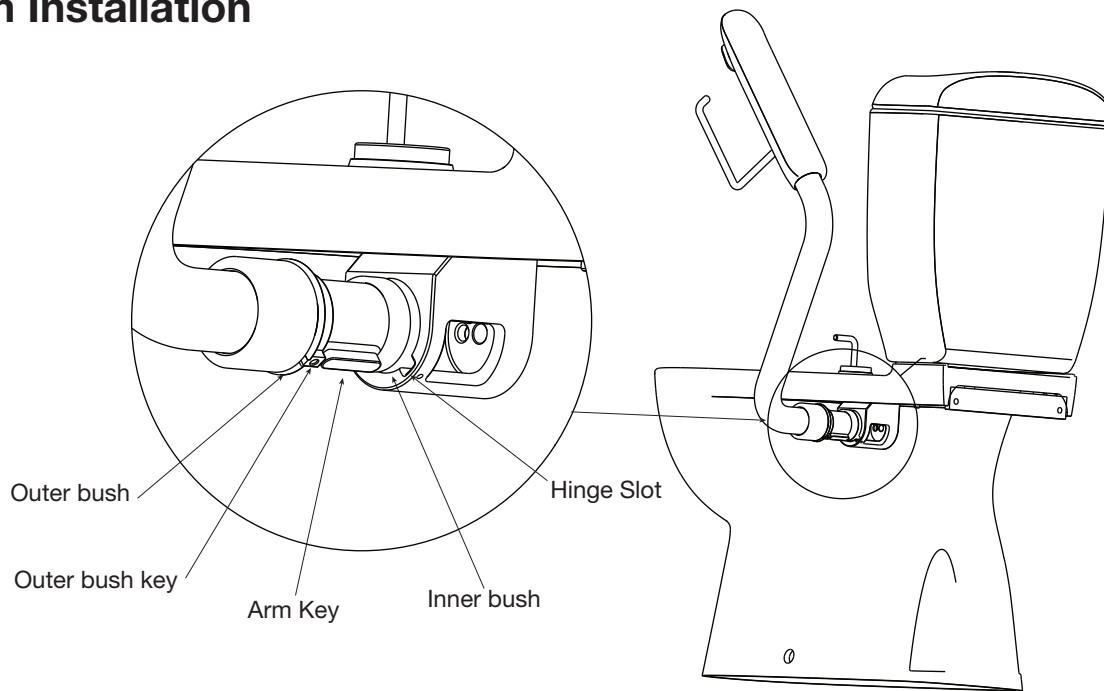


Fig. 11

12. Assemble two (2) bushes per arm as shown in **Fig. 11**. Ensuring that outer bush key lines up with arm key. Assemble arms into bracket by rotating to upright position, aligning key into hinge slot and sliding in.

Locking Set Screw Installation

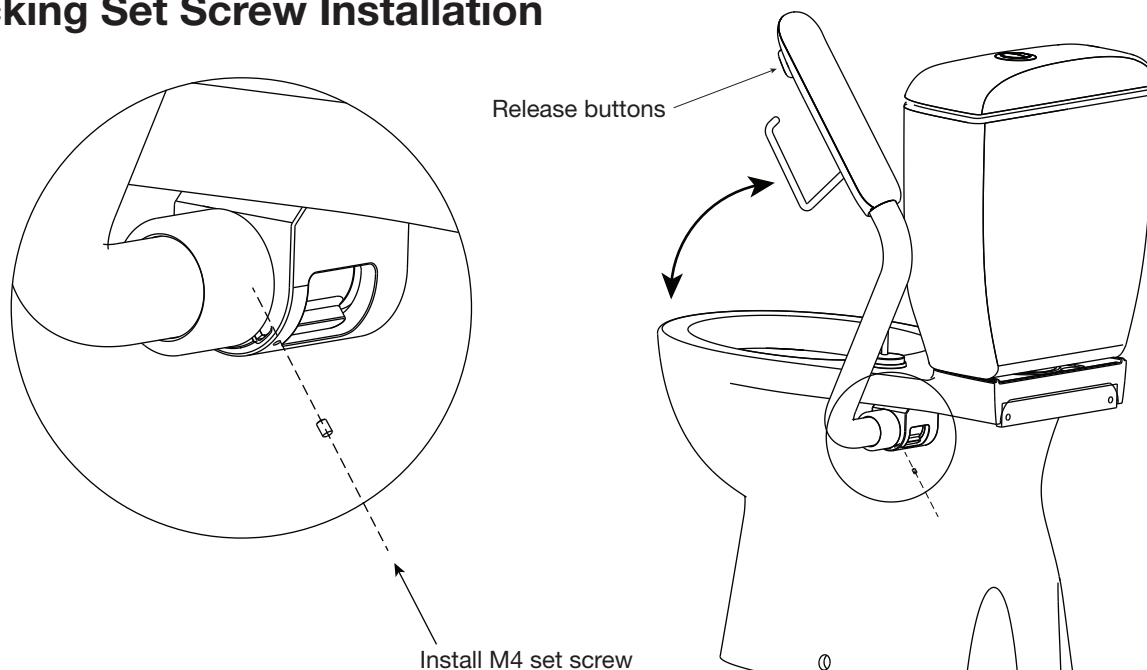


Fig. 12

13. Install the two (2) M4 locking set screws into hingblock as shown in **Fig. 12**. Press the release button and ensure that the arms rotate up and down freely and the release mechanism is working satisfactorily. Arms should lock in both upper and lower positions. Button releases lock.