

caroma®

Profile Skew

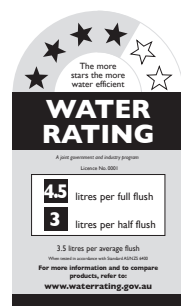
Close-Coupled Skew Trap Pan



CI/SfB	(74.1)	g3
Date	July 2008	

Supersedes all previous issues

4.05.1



Profile Skew

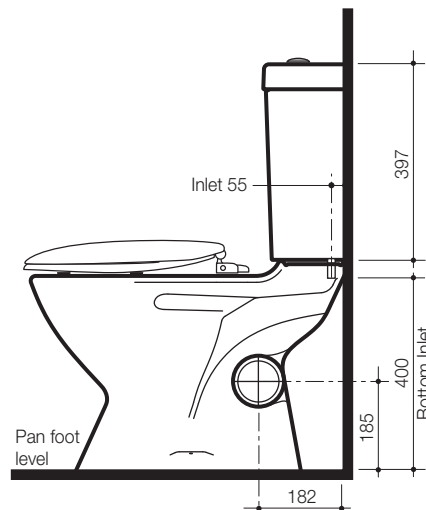
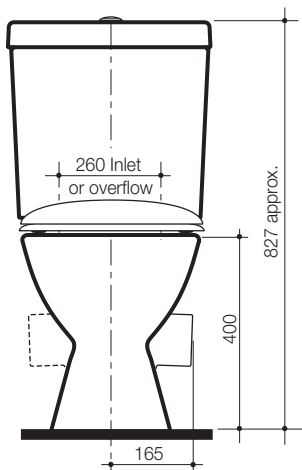
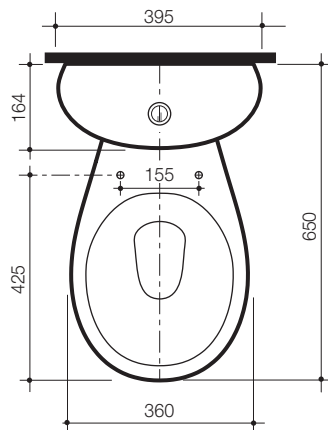
Vitreous China Close-Coupled Skew Trap Pan



Shown with Profile Cistern

A vitreous china, close-coupled, skew trap compact pan featuring minimal projection from wall dimension and low overall height. The **Profile Skew** pan is available in left or right hand skew trap options and can be simply coupled with the cistern.

- Pan:** **Profile Skew** 4.5 litre full flush.
- Traps:** **Profile Skew** left or right hand skew trap. Side delivery 95°.
- Cisterns:** **Bolt on Profile Cistern** – has a free fitting lid and is suitable for domestic and light commercial applications. Fitted with a Quietflow 2 inlet valve.
- Inlet Valve and Overflow:** **Standard Bottom Entry Cistern** – available as right hand inlet which is interchangeable and incorporates Quietflow inlet valve. Internal overflow only.
- Fixing:** The cistern is fixed directly to the pan with a robust base fixing system without the need for wall fixing.
- Seats:** The following Caroma seats are recommended – **Pedigree, Pedigree II, Scandinavia, Pressalit 2000, Caravelle 2000, Avalon, Trident** or **Deluxe**. See sheet 5.01 SEATS for further details.
- Colours:** White only.
- Bezel:** Colours to match cistern as specified in colour selector.
- Installation:** The installation of the toilet suite shall be in accordance with the normal minimum drainline grade requirements in AS/NZS 3500.2.
- Dimensions:** All dimensions are in millimetres and are subject to normal manufacturing variations. Caroma pursues a policy of continuing improvement in design and performance of its products. The right is therefore reserved to vary specifications without notice.



Profile Skew Pans:		Code No.
4.5/3 litre	LH skew trap	842900
	RH skew trap	842800
Close-Coupled Cistern:		
4.5/3 litre	Profile	810360

Note: All height dimensions to underside of pan, make allowance for bedding.

Bedding: The pan should be fixed to the floor with a sand cement mixture of 3:1 to a depth of 60mm. Do not use lime or fast drying cement in the bedding mixture. When bedded the back of the foot of the pan should be approximately 10mm above the finished floor.

Screw fixing: The pan should be bedded with an acetic cured silicone sealant and fixed with corrosion resistant screws and pan guard washers.

Use Caroma screw fixing kit. Code No.601150.