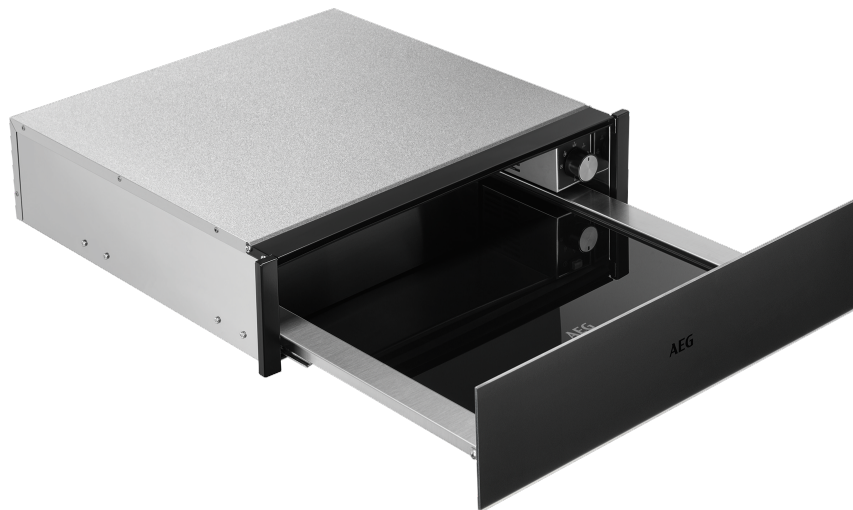


14cm matte black built in warming drawer with 6 place settings and fan heat circulation.



## Product Details

### FEATURES

---

6 place setting

Ideal for dough proving

Plate warming at 60°C

Warming cups and glasses at 40°C

---

### BENEFITS

---

#### SERVE MEALS HOT ON PRE-WARMED PLATES

Why let your perfectly cooked meals go cold? Serve at the temperature meals will best be appreciated on pre-warmed plates. The warming drawers high-performance fan circulates the heat evenly maintaining a consistent 80C, the ideal, safe plate-warming temperature, even for the fine china you use when entertaining.

#### OPTION TO PRE-WARM CUPS AND GLASSES

Warming cups, glasses and jugs at a cosy yet safe 40C will keep liquids such as hot drinks and sauces warmer when served. Cup warming is essential to barista-quality coffee at home. Coffee professionals recommend warm cups for freshly prepared coffee to retain its heat, aroma and crema for longer.

---

#### THE IDEAL PLACE TO LET YOUR DOUGH RISE

The warming drawer is the ideal environment for your dough to rise when baking bread. Now you can turn out home-made loaves with the perfect shape and scrumptious texture created by a professional baker.

#### EASY ACCESS AND EXTRA STABLE

The warming drawer glides open with ease and safety for full access to the interior. Inside, dishes and plates remain stable on the anti-slip mat.

---

#### IN PERFECT STYLE

Thanks to its stylish design, the warming drawer seamlessly integrates with the rest of your kitchen and perfectly matches your AEG oven.

---

## Specifications

### PRODUCT PROFILE

Domestic warranty details (yrs)	5
Type	built-in

### FEATURES

Number of place settings	6
Features	Cups & Glass warming (40d °C), Heating Element, Plate Warming (60d °C), Fan air circulation, Variable temperature control, On/Off LED, Anti-slip mat, Temperature range, Defrosting (30d °C), Dough proving (40d C-50d °C), Food warming (60d C-80d °C), Low temperature cooking (80d °C)

### EXTERIOR

Exterior Finish	Matte black
Push to open drawer system	yes

### SPECIFICATIONS

Power	Cable
Maximum Power Rating (W)	430

### DIMENSIONS

#### PRODUCT

Total height (mm)	140
Total width (mm)	595

#### FLUSH

Cut out height (mm)	141
Cut out width (mm)	600

Total depth (mm) 535

---

Cut out depth (mm) 580

---

## SHIPPING

---

Shipping Volume (m3) 0.089

---

Shipping Weight (Kg) 19

---

Pack dimensions height 225

---

Pack dimension width 610

---

Pack dimension depth 650

---

## Terms and Conditions

### IMPORTANT

This is a guide of product dimensions only. For complete installation instructions, refer to the manual provided with product.

### PRODUCT INFORMATION

The descriptors and illustrations in this publication apply to the specific products and models described as at the date of issue. Under our policy of continuous product development, product specifications may change without notice. Prospective purchasers should therefore check with their retailer to ensure this publication correctly describes the products that are being offered for sale. All information supplied is to be used for general reference purposes only and is on the understanding that Electrolux Home Products Pty Ltd (Australia) and Electrolux (NZ) Ltd (New Zealand) will not be liable for any loss, liability or damage of whatever kind arising as a result of reliance on such information. Colours of products illustrated are as close as printing limitations allow. Electrolux will at all times comply with its obligations pursuant to law including Trade Practices (Australian Consumer Law) Act and Regulations.

### WARRANTY

Electrolux Home Products warrants that for domestic applications the AEG appliances featured are free from defects in materials and workmanship for 5 years (3 months warranty for commercial applications). All warranties are subject to the conditions set out in the warranty card accompanying the product when purchased.

#### ELECTROLUX HOME PRODUCTS AUSTRALIA

telephone: 1300 363 664

fax: 1800 350 067

email: [customercare@aegaustralia.com.au](mailto:customercare@aegaustralia.com.au)

web: [www.aeg.com/au](http://www.aeg.com/au)

#### ELECTROLUX HOME PRODUCTS NEW ZEALAND

telephone: 0800 10 66 10

fax: 09 573 2221

email: [customercare@electrolux.co.nz](mailto:customercare@electrolux.co.nz)

web: [www.aeg.com/au](http://www.aeg.com/au)